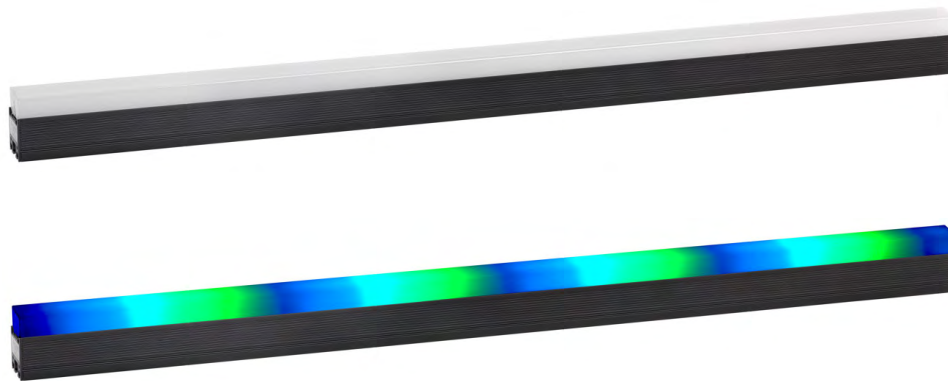


# MARTIN VDO SCEPTRON 10

The VDO Sceptron, by design, is a linear LED video fixture that's rated for outdoor use and is versatile, interchangeable and easy to use.

Driven by the Martin P3 System Controller family, the VDO Sceptron 10 is easily configurable allowing for quick mapping and setup, as well as backwards compatibility with DMX for smaller setups.

The integrated power and data cabling allows for long daisy-chains with multiple fixtures per cable-run, while the power supply can be located up to 50 m away for a clean setup. Available in lengths of 320 and 1000mm.



## FEATURES | SPECIFICATIONS | BENEFITS

- 10 mm pixel pitch
- 250 cd per meter calibrated
- 750 lumen per meter calibrated
- High-quality 16-bit per color image processing technology
- Pixel-level brightness and color calibration
- P3/DMX controllable (automatic protocol detection)
- Intuitive mapping and addressing via P3 System Controller
- Combined power/data input
- P3 PowerPort 1500 or P3 PowerPort 1000 IP power and data processor capabilities
- Length: 320mm (12.6") and 1000mm (39.4")
- Width: 27mm (1.07")
- Height: 28mm (1.10")



SHOW TECHNOLOGY